



Primo Vision

## Primo Vision System featuring Primo Vision<sup>EVO</sup>

Time-Lapse Embryo Monitoring in Your Incubator



## Embryo Safety First

[www.cryo-innovation.com](http://www.cryo-innovation.com)

# Embryo Safety First

Using Primo Vision Time-Lapse Embryo Monitoring System inside your incubator provides maximum safety in your trusted culturing environment. Our system gives you the opportunity to observe all embryos without disturbing the incubation condition or changing your daily routine.



# Stress-free environment

Embryos develop undisturbed, stress-free in the trusted environment provided by the lab's incubator. The Primo environment is free of any kind of electromagnetic field effect, the embryos are not moved and the outstanding quality images are reached through minimum light exposure and with the Hoffmann contrast integration. Total light load in a 5 days project with 10 minutes imaging interval is still less compared to a one-time routine microscopic investigation.



No shear stress



No lubricants



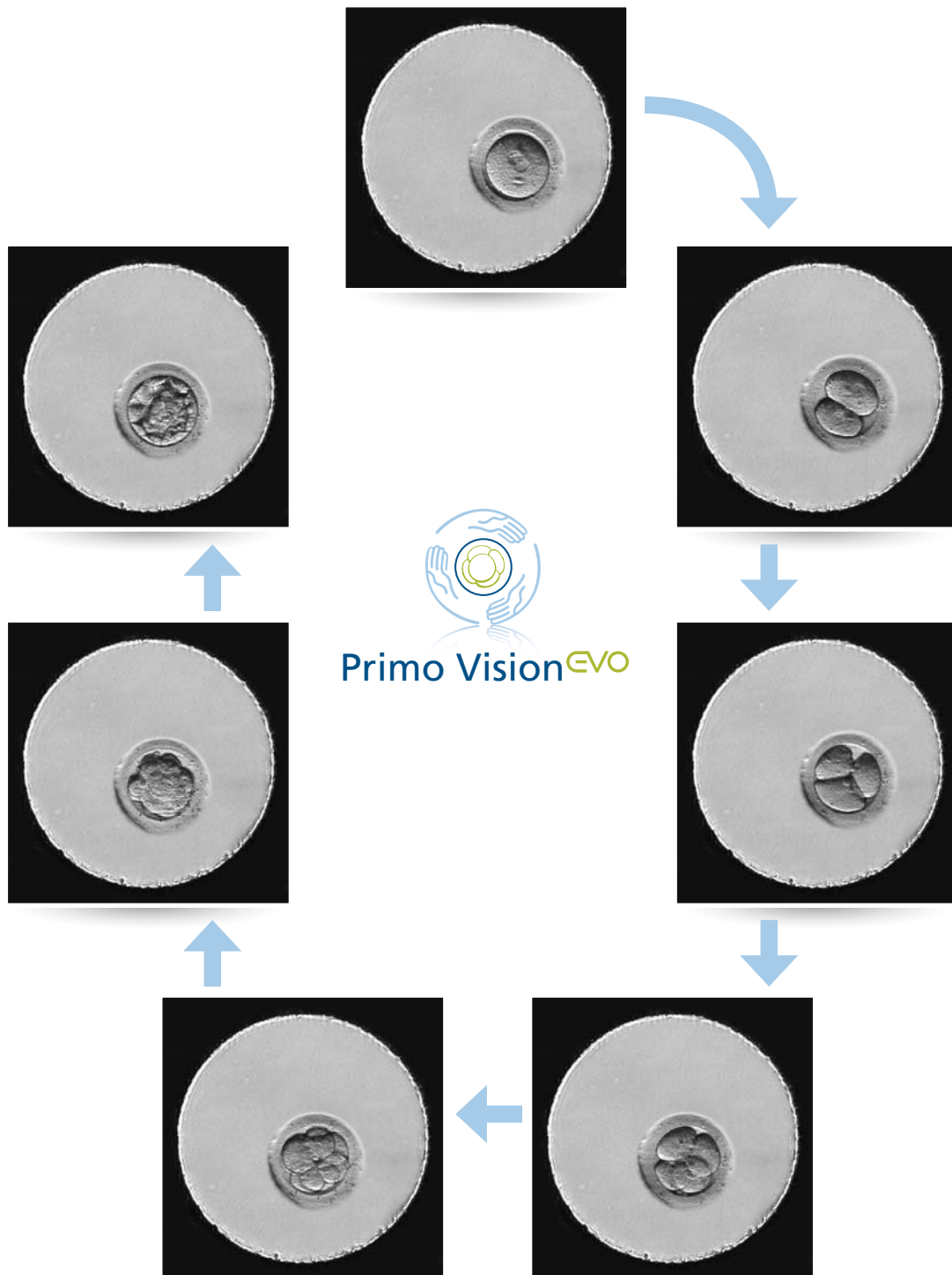
No electro smog



Minimal light exposure

# State-of-the-art image quality

Primo Vision<sup>EVO</sup> introduces the Hoffmann contrast integration for improved image analysis. The new feature enables the precise observation of embryos' developmental dynamics from polar body extrusion, PN formation, through time points of cleavages and cleavage intervals, blastocoel pulsation and exact identification of fragmentations and cleavage patterns.



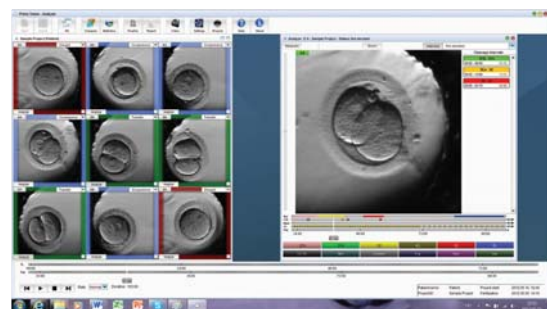
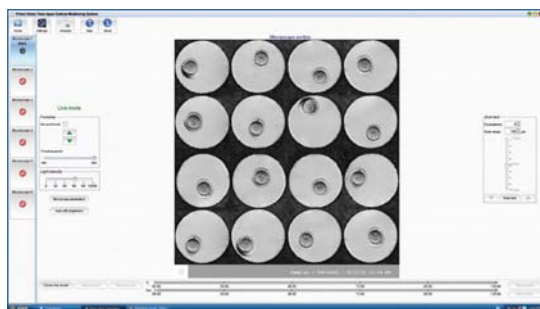
# Modular & Expandable

The modular structure allows expansion according to your needs or budget: the starting kit with one microscope monitors up to 16 embryos of the same patient, while the full system with 6 microscopes can follow up to 96 embryos of 6 patients. Additional microscopes can be installed at any time, giving you the flexibility during the planning phase of your investment.



# Capture-Analyze-Report-Present

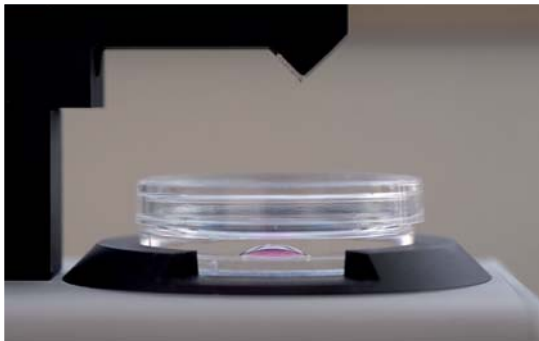
The Primo Vision Capture & Analyzer software provides an easy and reliable way to compare and analyze the development of embryos in a user-friendly environment. The software is also capable of creating your clinic's personalized report about the development path of the transferred embryos. Finishing the project, share the results with your patient by showing the embryo video created by the Primo Vision Analyzer software.



## Remote Access

While the pictures are taken inside the incubator in your lab, the images can be reached through the clinic's network by authorized personnel. The Remote Access feature not only gives you the opportunity to analyze the embryos' development in the comfort of your office or home, but also makes online evaluation with your colleagues or other professionals a reality.

If you are an iPad user, download the Primo Vision Viewer application and take advantage of the easy and comfortable solution of accessing your running or previous projects.



## Group Culture

The Well-of-the-Well (WOW) embryo culture dishes are uniquely designed for Primo Vision. Embryos are precisely identified and individually monitored. As a result of interaction between embryos, enhanced embryo development can be reached. The WOW dishes are CE certified and MEA tested.



# Technical specification

Microscope	
Net external dimensions	220 x 80 x 110 mm
Net weight	2,25 kg
Field of view	2600 x 1900 um
Camera	BW 5 MP (2560 x 1920 pixel)
Optics	Custom-made, Hoffmann contrast integrated optics
Illumination	Green LED (550 nm), adjustable intensity
Controlling Unit	
Type	Dell OptiPlex 390 SF N-series
Net external dimensions	290 x 95 x 330 mm
Net weight	5,45 kg
Processor	Inter Core i3-2100 (3.10 GhZ, 3MB)
Memory	4 GB
Storage capacity	500 GB
Platform	Windows XP Embedded POS-ready
Operation	
Focusing method	Motorized – from outside the incubator
Focus plane(s)	Multiple (min. 3 max. 11 planes)
Image taking frequency	Configurable by the user ( from 5 min till 60 min)
User Interface /controlling unit	Provided DELL computer with SW preinstalled
Display (not part of the system)	Required: HD resolution (1920 x 1080 or higher), typical 24" +
Keyboard and mouse	Included
Remote access	Yes

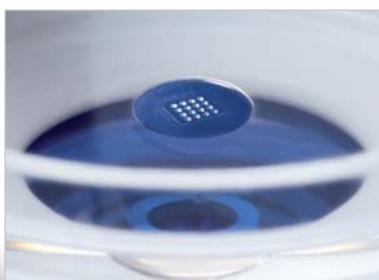
## About the Company

Cryo Management Ltd., as an R&D company focuses on accomodating stable innovative solutions into Assisted Reproductive Technologies, both human and animal. Company headquarters and labs are located in Budapest, while research is conducted in cooperations world wide.





Primo Vision



Innovative solutions for ART

**Cryo Management Ltd.**

Hungary, 6722 Szeged, Gogol u. 9/B.

Phone: +36 1 211 2041

Fax: +36 1 883 8461

Email: [sales@cryo-innovation.com](mailto:sales@cryo-innovation.com)

[www.cryo-innovation.com](http://www.cryo-innovation.com)